



9225 BEE CAVES

BUILDING A | OFFICE FOR LEASE



DAVID STOJANIK | 512.785.5016 | david@brentwoodcommercialllc.com | www.BrentwoodCommercialLLC.com

All information contained herein, while based on information deemed reliable, has been gathered from various third-party sources, is not in any way warranted by Brentwood Commercial LLC, may not be entirely complete or accurate, and is subject to corrections, errors and/or omissions. This listing is subject to prior sale, lease, change in price and/or removal from the market without notice. The user of any information contained herein should conduct his/her own independent research including, without limitation, obtaining its own counsel and the advice of a real estate professional.

FLOOR 1

HIGHLIGHTS

- Located at lighted intersection
- Excellent egress-ingress and visibility
- Modern-industrial finishes
- Ample parking
- Glass entry
- Upscale lighting
- Break area
- Private offices and balcony
- Conference room
- High ceilings
- Polished concrete floors
- Spectacular views

SIZE

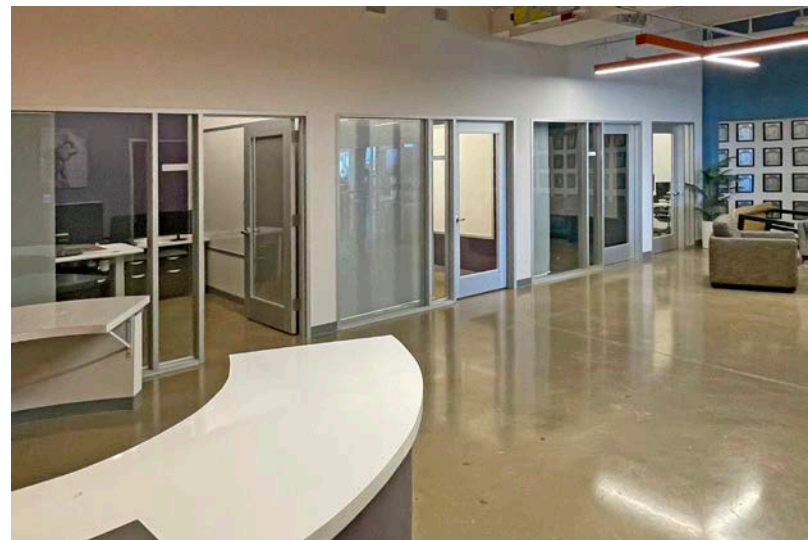
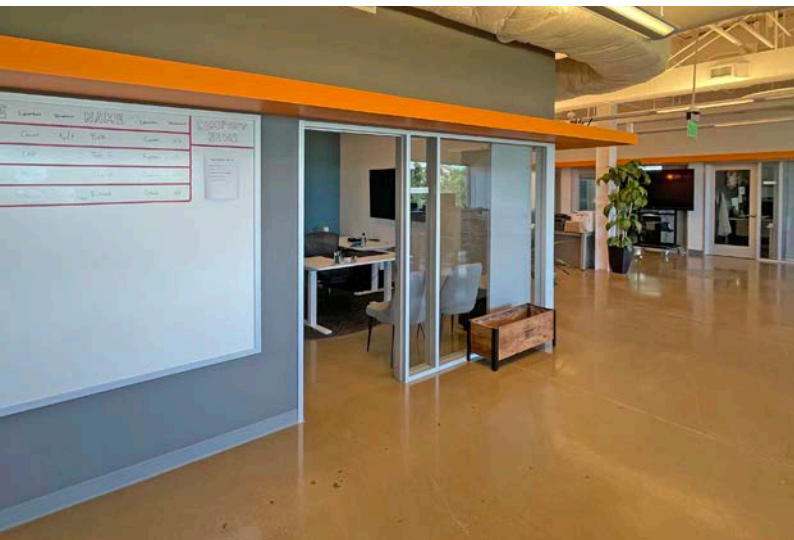
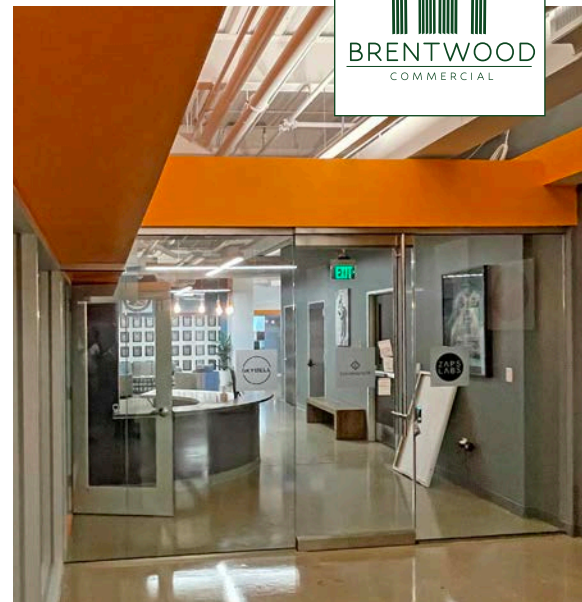
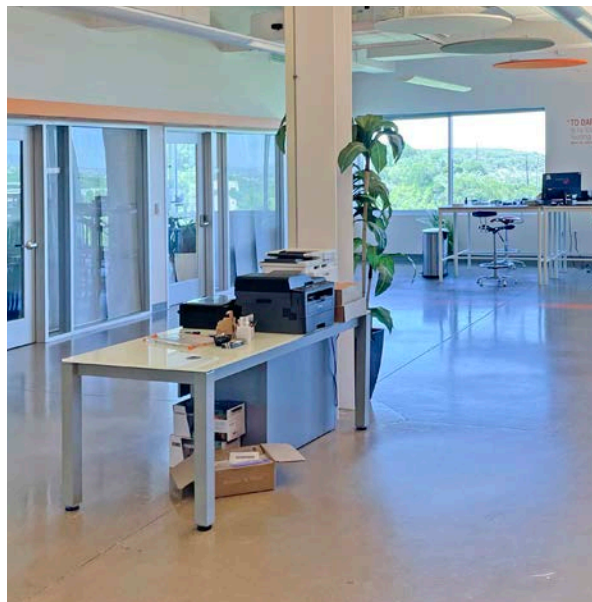
11,656 RSF

MONTHLY RENTAL RATE

\$27.00/RSF + OpEx (\$12.00/RSF)

TERM

2 - 7 Years

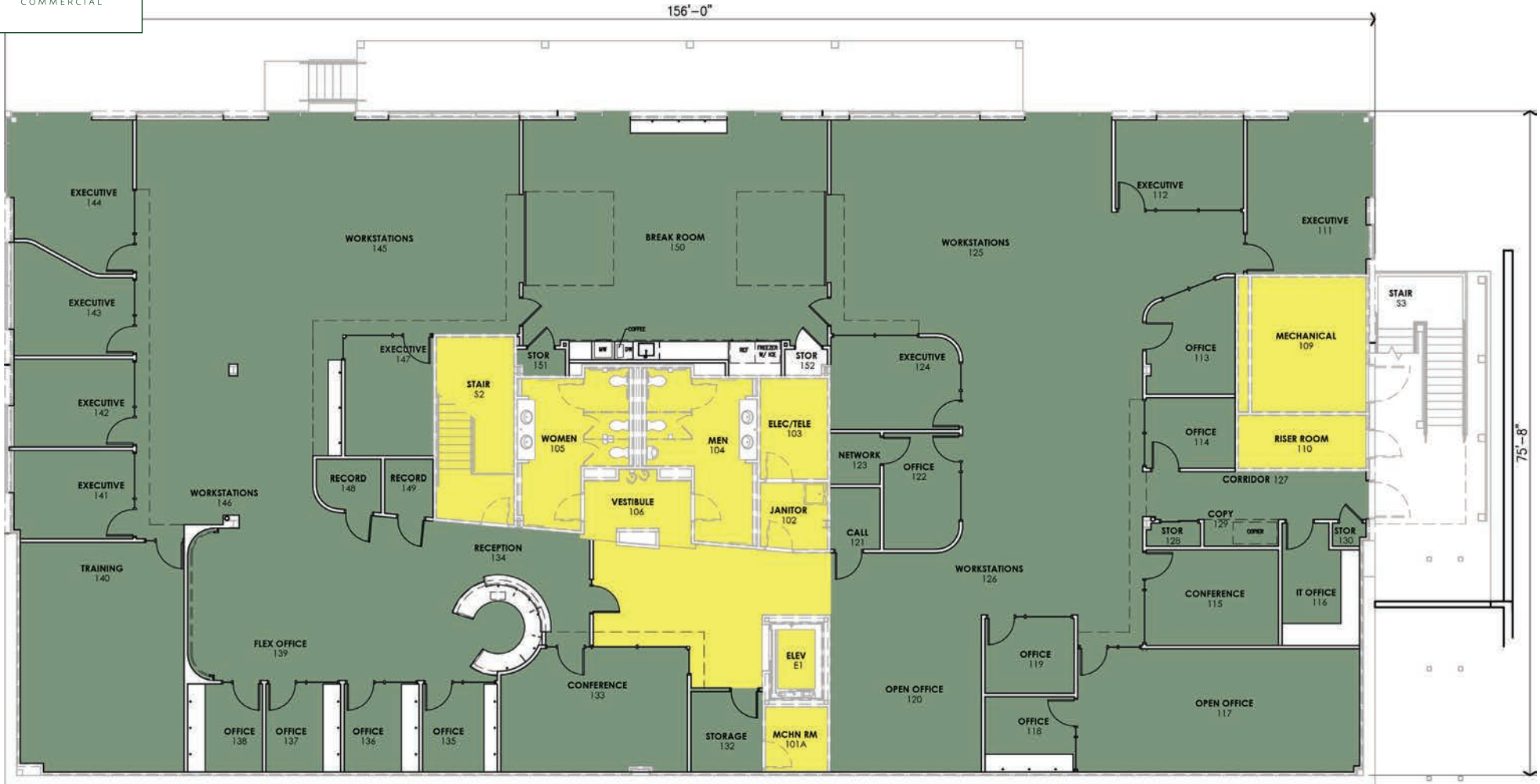


OFFICE FOR LEASE 9225 BEE CAVES ROAD | AUSTIN, TX 78733

DAVID STOJANIK | 512.785.5016 | david@brentwoodcommercialllc.com | www.BrentwoodCommercialLLC.com

All information contained herein, while based on information deemed reliable, has been gathered from various third-party sources, is not in any way warranted by Brentwood Commercial LLC, may not be entirely complete or accurate, and is subject to corrections, errors and/or omissions. This listing is subject to prior sale, lease, change in price and/or removal from the market without notice. The user of any information contained herein should conduct his/her own independent research including, without limitation, obtaining its own counsel and the advice of a real estate professional.

FLOOR 1



■ 11,656 RSF | Available Now ■ Common Area Space

OFFICE FOR LEASE 9225 BEE CAVES ROAD | AUSTIN, TX 78733

DAVID STOJANIK | 512.785.5016 | david@brentwoodcommercialllc.com | www.BrentwoodCommercialLLC.com

All information contained herein, while based on information deemed reliable, has been gathered from various third-party sources, is not in any way warranted by Brentwood Commercial LLC, may not be entirely complete or accurate, and is subject to corrections, errors and/or omissions. This listing is subject to prior sale, lease, change in price and/or removal from the market without notice. The user of any information contained herein should conduct his/her own independent research including, without limitation, obtaining its own counsel and the advice of a real estate professional.

FLOOR 3

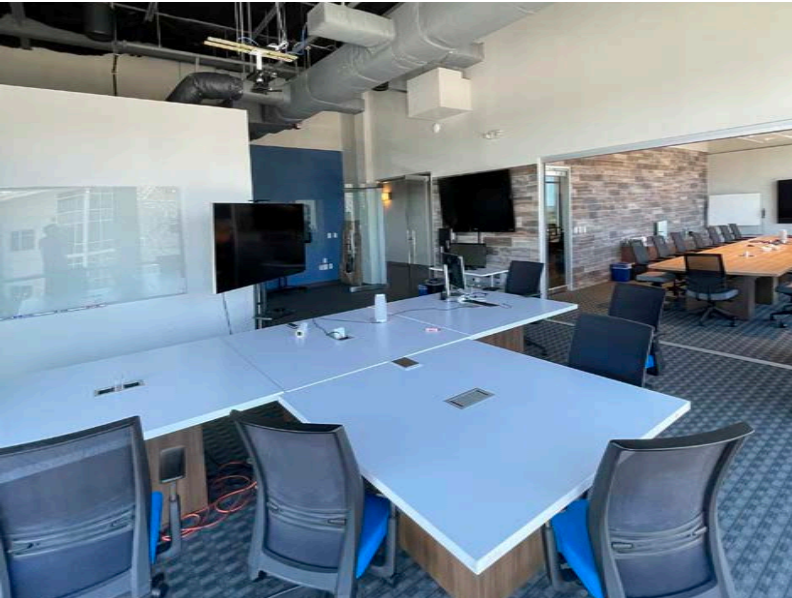
HIGHLIGHTS

- Full-floor availability
- Located at lighted intersection
- Excellent egress, ingress and visibility
- Spectacular views
- Modern-industrial finishes
- Floor-to-ceiling/wall-to-wall glass
- Glass entry
- Upscale lighting
- Break area
- Private offices and balcony
- Conference rooms
- High ceilings
- Polished concrete floors
- Ample parking

SIZE
3,016 RSF

MONTHLY RENTAL RATE
\$32.00/RSF + OpEx (\$12.00/RSF)

TERM
2 - 7 Years

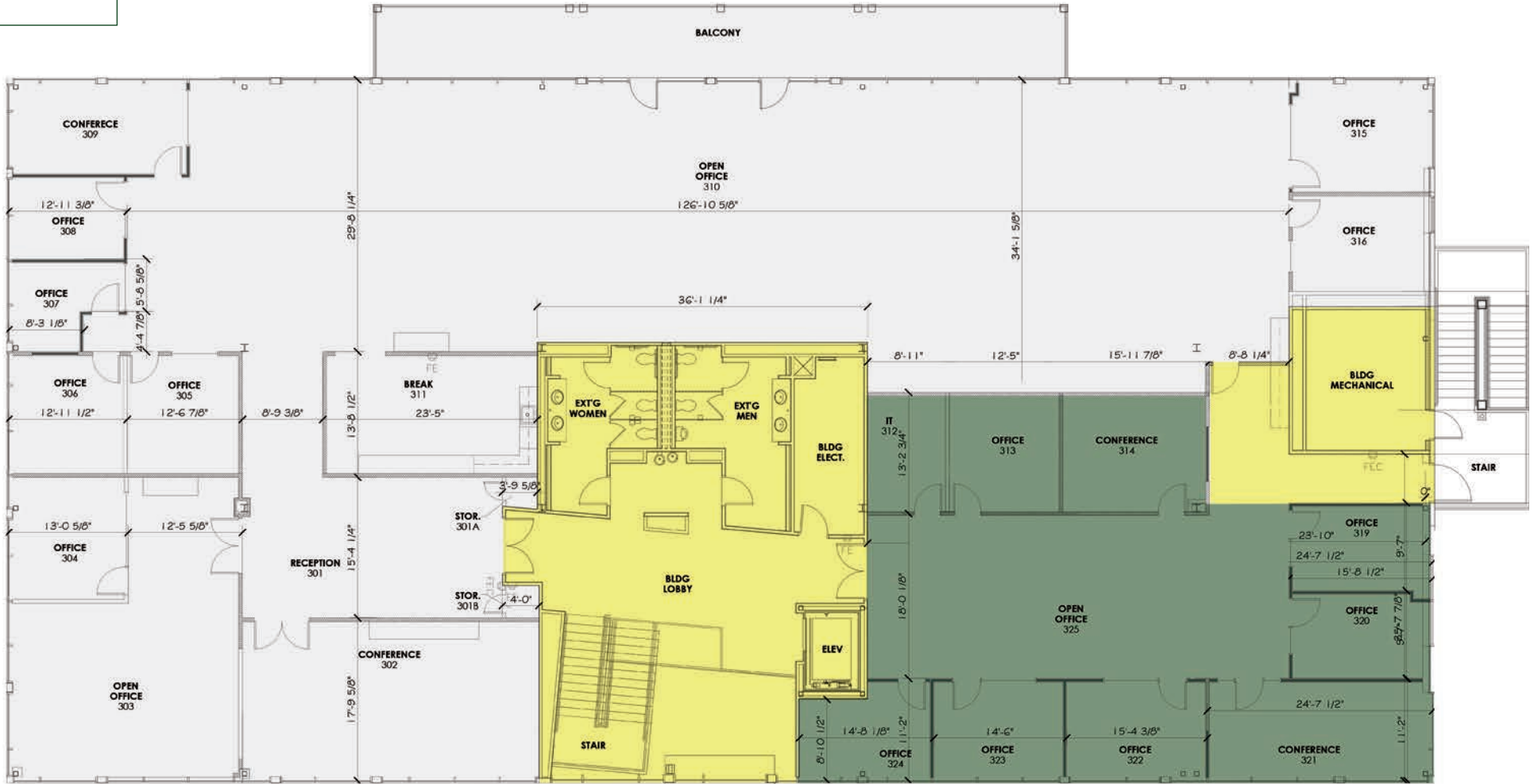


OFFICE FOR LEASE 9225 BEE CAVES ROAD | AUSTIN, TX 78733

DAVID STOJANIK | 512.785.5016 | david@brentwoodcommercialllc.com | www.BrentwoodCommercialLLC.com

All information contained herein, while based on information deemed reliable, has been gathered from various third-party sources, is not in any way warranted by Brentwood Commercial LLC, may not be entirely complete or accurate, and is subject to corrections, errors and/or omissions. This listing is subject to prior sale, lease, change in price and/or removal from the market without notice. The user of any information contained herein should conduct his/her own independent research including, without limitation, obtaining its own counsel and the advice of a real estate professional.

FLOOR 3

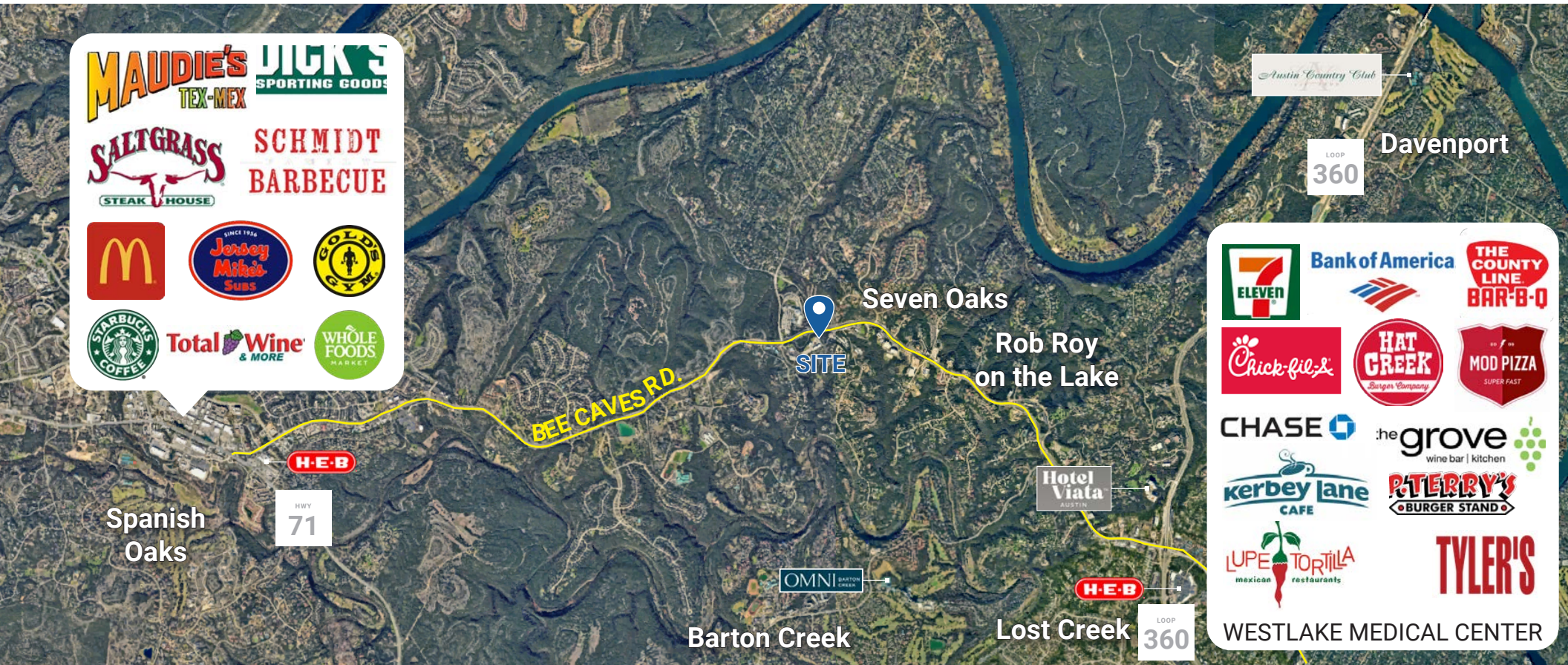


3,016 RSF | Available Now
 Common Area Space
 Leased Space

OFFICE FOR LEASE 9225 BEE CAVES ROAD | AUSTIN, TX 78733

DAVID STOJANIK | 512.785.5016 | david@brentwoodcommercialllc.com | www.BrentwoodCommercialLLC.com

All information contained herein, while based on information deemed reliable, has been gathered from various third-party sources, is not in any way warranted by Brentwood Commercial LLC, may not be entirely complete or accurate, and is subject to corrections, errors and/or omissions. This listing is subject to prior sale, lease, change in price and/or removal from the market without notice. The user of any information contained herein should conduct his/her own independent research including, without limitation, obtaining its own counsel and the advice of a real estate professional.



OFFICE FOR LEASE 9225 BEE CAVES ROAD | AUSTIN, TX 78733

DAVID STOJANIK | 512.785.5016 | david@brentwoodcommercialllc.com | www.BrentwoodCommercialLLC.com

All information contained herein, while based on information deemed reliable, has been gathered from various third-party sources, is not in any way warranted by Brentwood Commercial LLC, may not be entirely complete or accurate, and is subject to corrections, errors and/or omissions. This listing is subject to prior sale, lease, change in price and/or removal from the market without notice. The user of any information contained herein should conduct his/her own independent research including, without limitation, obtaining its own counsel and the advice of a real estate professional.